



MACGREGOR RANCH DRYGULCH FOREST RESTORATION



Implementing Agency:
Larimer Conservation District

Funding Agencies:
**Peaks to People Water Fund/TNC
Northern Water**

Funding Year:
2024

Treatment Type:
Mechanical Thinning

Watershed:
Big Thompson

PROJECT DESCRIPTION

This forest restoration project will create defensible space, protect ingress and egress routes along Dry Gulch Road, and build on previous work by LCD, Estes Valley Fire Protection District, Larimer County Sheriff's Office, and private citizens. It will also provide community outreach and educational opportunities. Spanning 104 acres, the project addresses the area's shift from Ponderosa Pine to higher tree densities, younger age classes, and the encroachment of non-fire-adapted species, increasing wildfire risk. This location is a priority in the 2022 Estes Park Community Wildfire Protection Plan.

Location:

This historic ranch is nestled in the Northwest corner of the Estes Valley, bordering the Rocky Mountain National Park land on the north and west sides.

EXPECTED OUTCOMES

104 acres
Fuels Reduction
and Forest Restoration

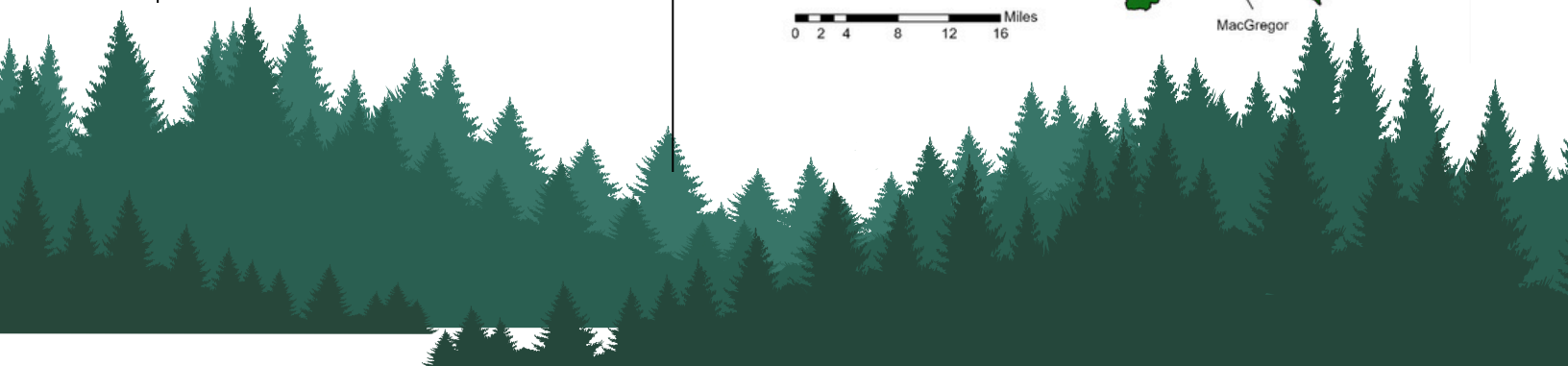
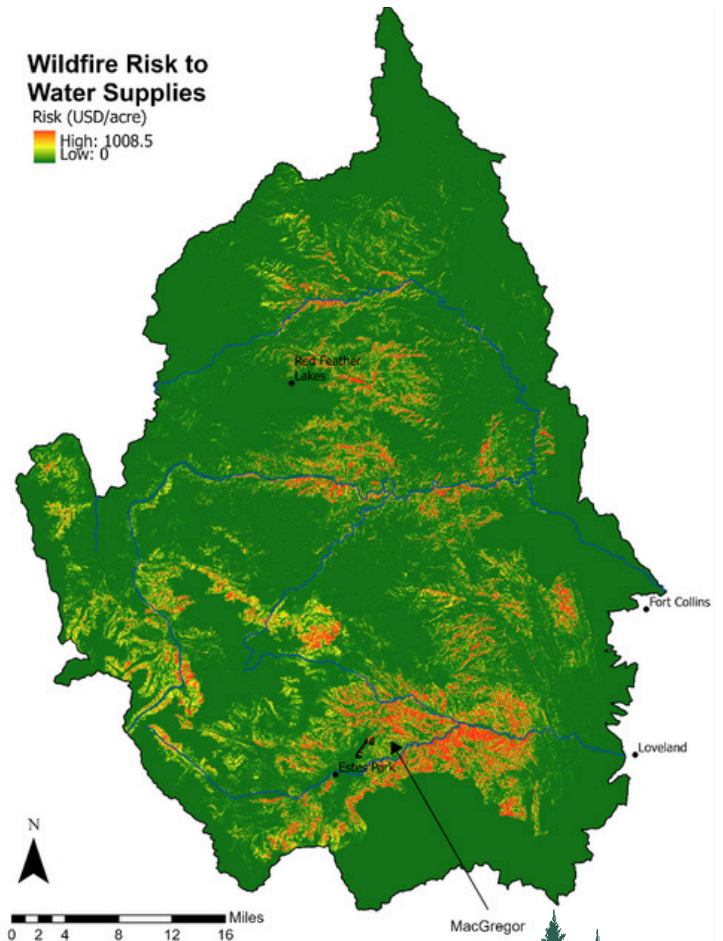
339 homes
Homes Within Influence
Zone of Treatments

104 acres
Crucial Wildlife Habitat
Protected from Wildfire



Wildfire Risk to Water Supplies

Risk (USD/acre)
High: 1008.5
Low: 0





Before



Before

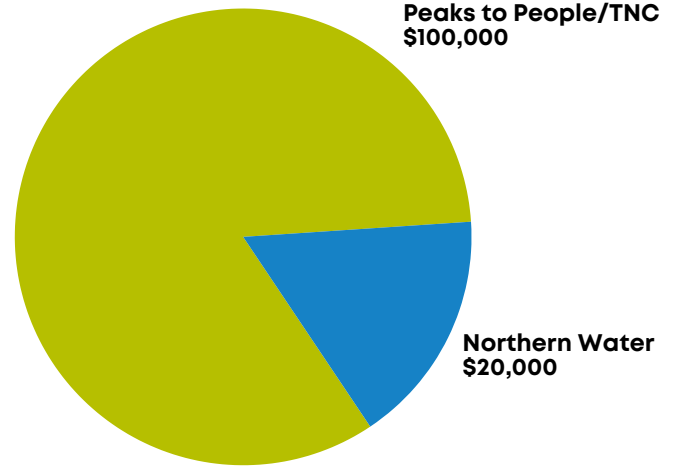


During

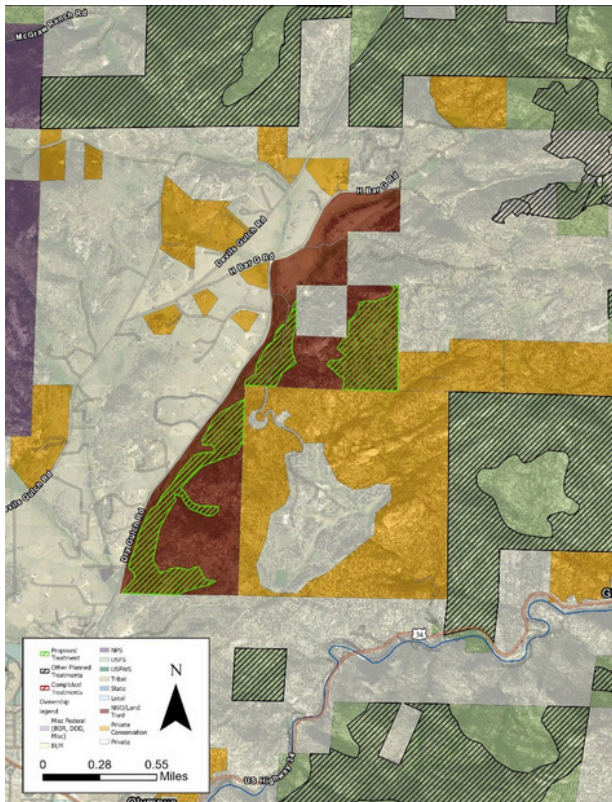
WATER SUPPLY INFRASTRUCTURE

This MacGregor Ranch unit drains directly into Dry Gulch, which connects to the North Fork of the Big Thompson River right below Olympus Dam. Sediment delivered to the Main Stem of the Big Thompson River has potential to affect water supply infrastructure associated with the Colorado-Big Thompson Project, the City of Loveland, and the City of Greeley.

FUNDING PROFILE



MAP



Detailed site map showing the proposed project boundary in green, with land ownership depicted with shading

PREDICTED CHANGE IN FIRE BEHAVIOR

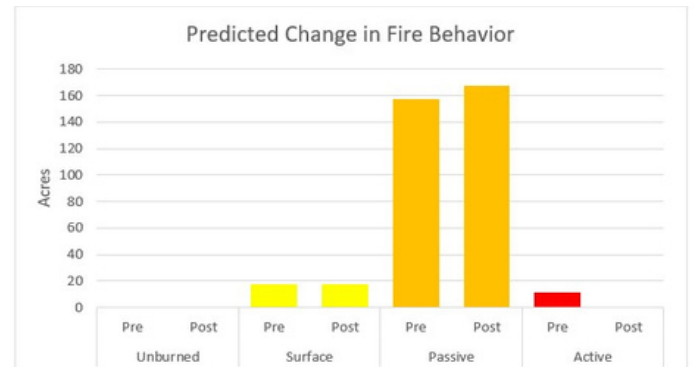


Figure 4: Expected change in fire behavior from mechanical thinning (crown fire activity from *ElmMag* 5).



CONTACT US TO LEARN MORE:



www.peakstopeople.org



info@peakstopeople.org



970-829-0020