



CHEROKEE PARK FOREST RESTORATION PROJECT



Implementing Agency:
Larimer Conservation District

Funding Agencies:
**Natural Resource Conservation Service
Larimer County Emergency Services
Peaks to People Water Fund**

Funding Year:
2023

Treatment Type:
Mechanical Thinning

Watershed:
Cache la Poudre

Location:

The project is in the Livermore, CO area and sits seven miles south of the Wyoming border, or eight miles north of Red Feather Lakes, CO

PROJECT DESCRIPTION

Historic forest type is largely Ponderosa Pine, interspersed with small stands of Lodgepole pine. The properties are currently experiencing encroachment of non-fire adapted species due to the absence of wildfire as a disturbance mechanism throughout the last 100+ years. Much of North Cherokee Park contains dead and downed pine trees as a result of Mountain Pine Beetles and the risk of catastrophic stand-replacing fire is extremely high. This project area requires heavy tree thinning to restore the forests to a healthy, ecologically functioning state.

EXPECTED OUTCOMES

344 acres

Fuels Reduction and Forest Restoration

21 homes

Homes Within Influence Zone of Treatments

75 acres

Active Crown Fire Reduced

1,453 metric tons

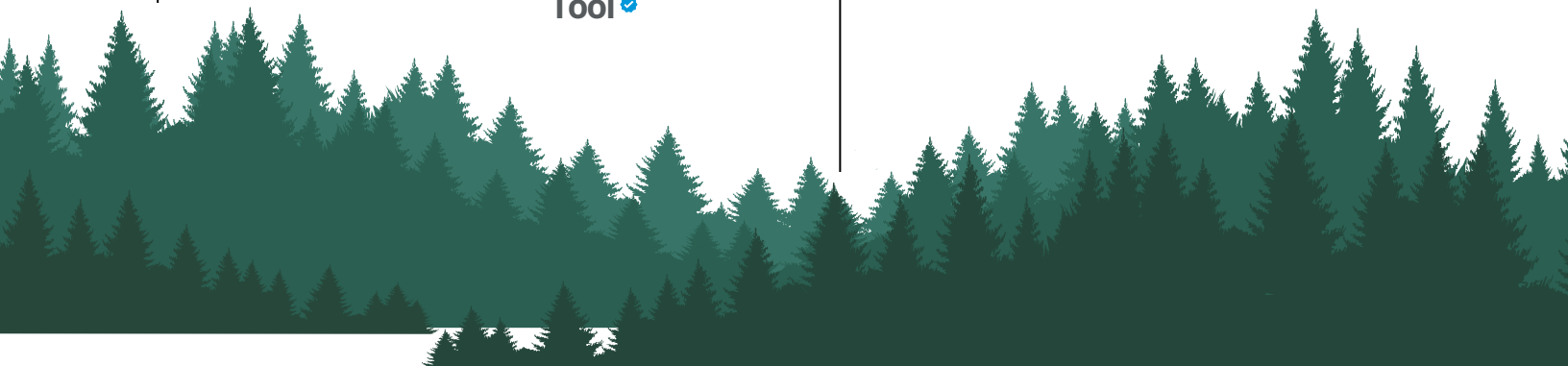
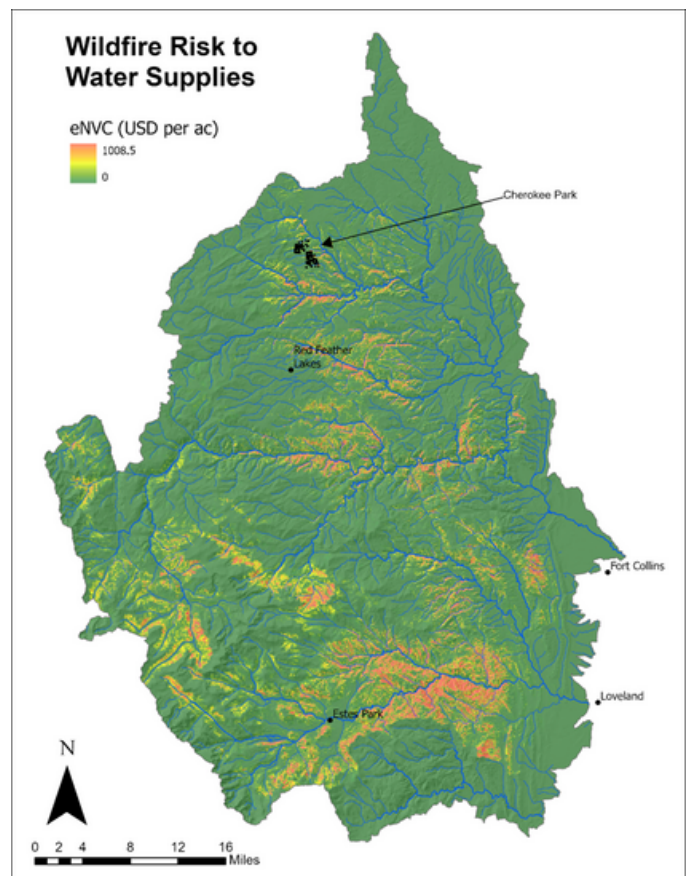
Conditional Reduction in Sediment Delivered To Water Supplies

\$9,623

Conditional Reduction in Sediment Costs to Water Supplies

3928 metric tons

Conditional Reduction in Erosion

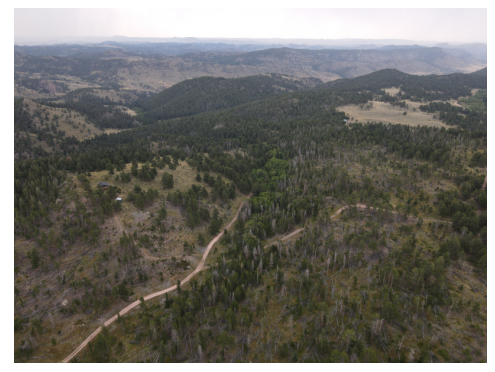




Before



Before

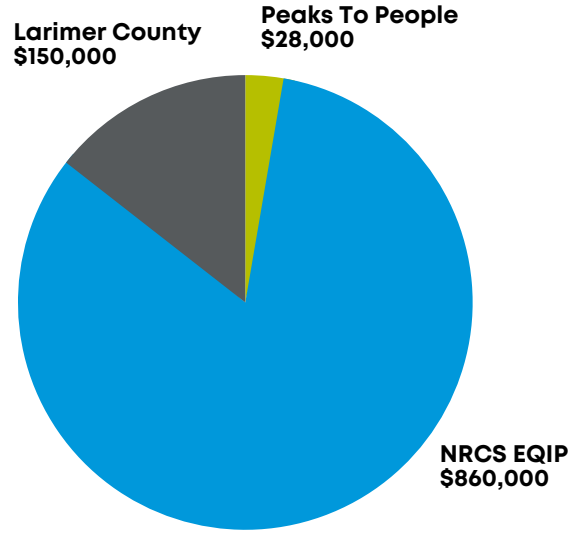


Before

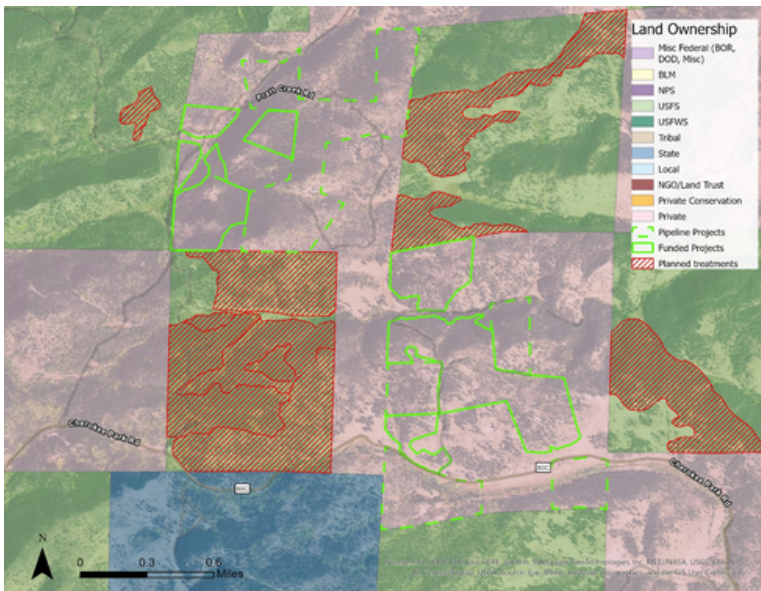
WATER SUPPLY INFRASTRUCTURE

The Cherokee Park Project is located in a low to moderate risk area in the Trail Creek watershed that drains into the North Fork, and then mainstem, of the Cache la Poudre River. There are major municipal water diversions for the Cities of Fort Collins and Greeley on both the North Fork and mainstem of the Cache la Poudre River. Halligan and Milton Seaman Reservoirs are on the North Fork. The City of Fort Collins depends on water diverted from the mainstem at either the North Poudre Supply Canal or the Fort Collins Pipeline near Gateway Natural Area.

FUNDING PROFILE

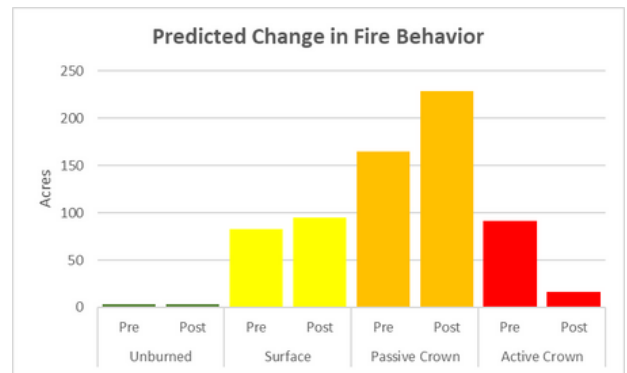


MAP



Detailed site map showing the funded project boundaries in green solid outlines and future pipeline projects in green dashed outlines, with land ownership depicted with shading and other planned projects in red.

PREDICTED CHANGE IN FIRE BEHAVIOR



CONTACT US TO LEARN MORE AND SUPPORT OUR WORK:



www.peakstopeople.org



info@peakstopeople.org



970-829-0020