



# POLE HILL EAST FOREST RESTORATION



Implementing Agency:  
**Larimer Conservation District**

Funding Agencies:  
**Peaks to People Water Fund  
Natural Resource Conservation  
Service  
CO Dept. of Natural Resources  
Colorado State Forest Service**

Funding Year:  
**2024**

Treatment Type:  
**Mechanical Thinning**

Watershed:  
**Big Thompson**

## Location:

**Pole Hill East is located within both Pole Hill and Pinewood Communities, 10 miles southwest of downtown Loveland, and 4 miles south of the Big Thompson River.**

## PROJECT DESCRIPTION

LCD has identified 65 acres of forest restoration treatment within the Pole Hill community over two different private properties. This treatment area builds upon over 400 acres of forest restoration work LCD has completed to date across 18 different properties in the community. These communities are situated in a densely populated and geographically condensed area, reflecting a massive risk for residents in the event of a wildfire. One ingress and egress route exist to and from the community, showing the necessity for continued forest restoration work in effort to make this area more resilient to wildfire. This project will build on past and planned fuel treatments in the area, including those funded by Peaks to People in the Pole Hill area.

## EXPECTED OUTCOMES

**65** acres  
Fuels Reduction  
and Forest Restoration

**36** acres  
Active Crown Fire  
Reduced

**778** metric  
tons  
Conditional  
Reduction in Erosion

**\$3117**  
Conditional Reduction in  
Sediment Costs to Water  
Supplies

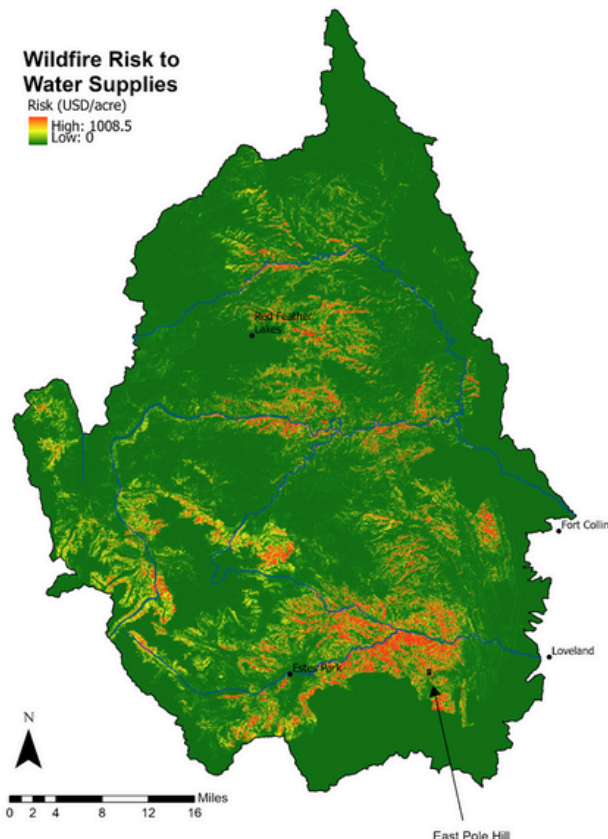
**40** homes  
Homes Within Influence  
Zone of Treatments

**366** metric  
tons  
Conditional Reduction in  
Sediment Delivered To  
Streams

**486** metric  
tons  
Conditional Reduction in  
Sediment Delivered To  
Water Supplies



**Wildfire Risk to  
Water Supplies**  
Risk (USD/acre)  
High: 1008.5  
Low: 0





## WATER SUPPLY INFRASTRUCTURE

The East Pole Hill project is in a catchment that drains to the Big Thompson River via Cottonwood and Dry Creeks, not to Pinewood Reservoir. Their position upwind of Pinewood, Flatiron, Carter Lake, and the soon to be Chimney Hollow Reservoirs could mitigate fire spread into the watersheds directly draining to these critical components of the Colorado-Big Thompson system. The downstream values include Barnes Ditch and the Loveland Greeley Canal which are valued by the City of Greeley. The properties fall within an area with moderate risk to water supplies.

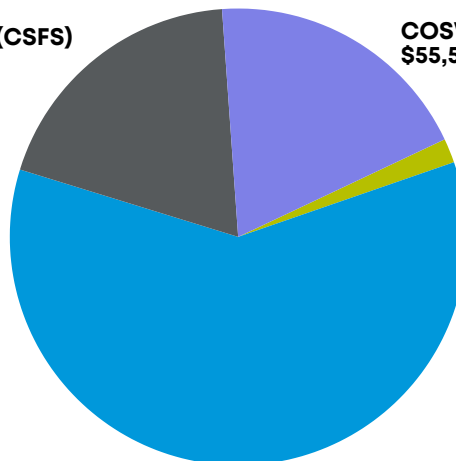
## FUNDING PROFILE

**FRWRM (CSFS)**  
\$55,543

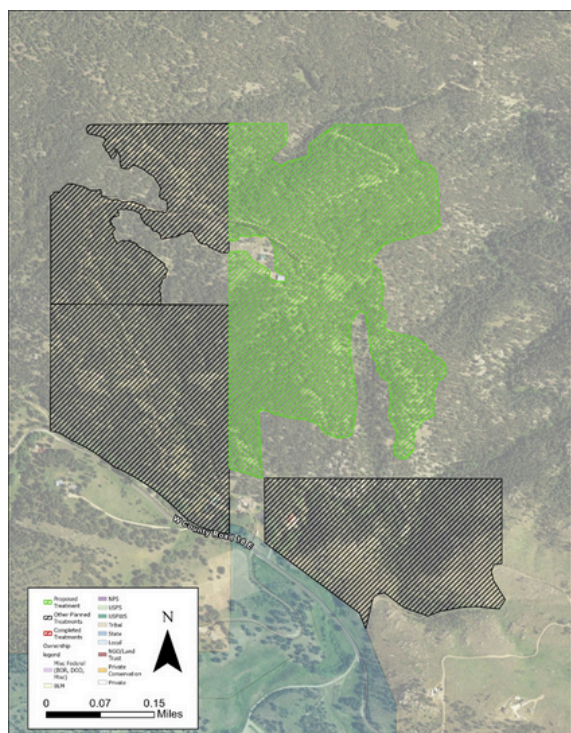
**COSWAP (CO DNR)**  
\$55,543

**Peaks To People**  
\$5,000

**EQIP (NRCS)**  
\$174,613

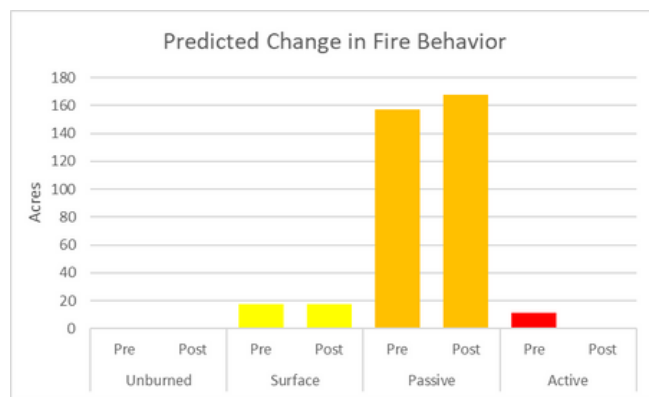


## MAP



Location of the project relative to past, planned, and in-progress treatments and land ownership.

## PREDICTED CHANGE IN FIRE BEHAVIOR



**CONTACT US TO LEARN MORE AND SUPPORT OUR WORK:**



[www.peakstopeople.org](http://www.peakstopeople.org)



[info@peakstopeople.org](mailto:info@peakstopeople.org)



**970-829-0020**