



# MAC GREGOR RANCH FOREST RESTORATION



Implementing Agency:  
**Larimer Conservation District**

Funding Agencies:  
**NRCS  
Peaks to People Water Fund  
Colorado State Forest Service**

Funding Year:  
**2022**

Treatment Type:  
**Mechanical Thinning**

Watershed:  
**Big Thompson**

## Location:

**This historic ranch is nestled in the Northwest corner of the Estes Valley, bordering the Rocky Mountain National Park land on the north and west sides.**

## PROJECT DESCRIPTION

This phase will restore 160 acres, making the total of completed and planned treatment areas on the ranch 360 combined acres. With approx. 96 overstory trees/acre and an average diameter of 6-12 inches, the area is overgrown with many douglas fir trees in the understory along with small and medium sized ponderosa pine. The overall goals of this prescription are to increase the quality and quantity of available wildlife habitat, increase resistance to severe wildfire, increase resilience to pests and pathogens, and finally to enhance the diversity of the understory plant life.

## EXPECTED OUTCOMES

**167** acres  
Fuels Reduction and Forest Restoration

**18** acres  
Active Crown Fire Reduced

**367** metric tons  
Conditional Reduction in Erosion

**\$5,392**  
Conditional Reduction in Sediment Costs to Water Supplies

**906** homes  
Homes Within Influence Zone of Treatments

**500** acres  
Crucial Wildlife Habitat Protected from Wildfire

**179** metric tons  
Conditional Reduction in Sediment Delivered To Water Supplies

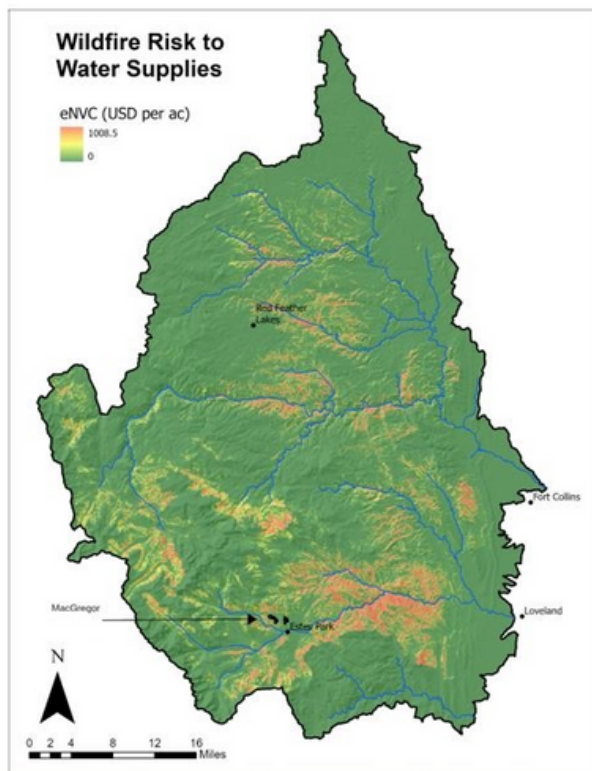
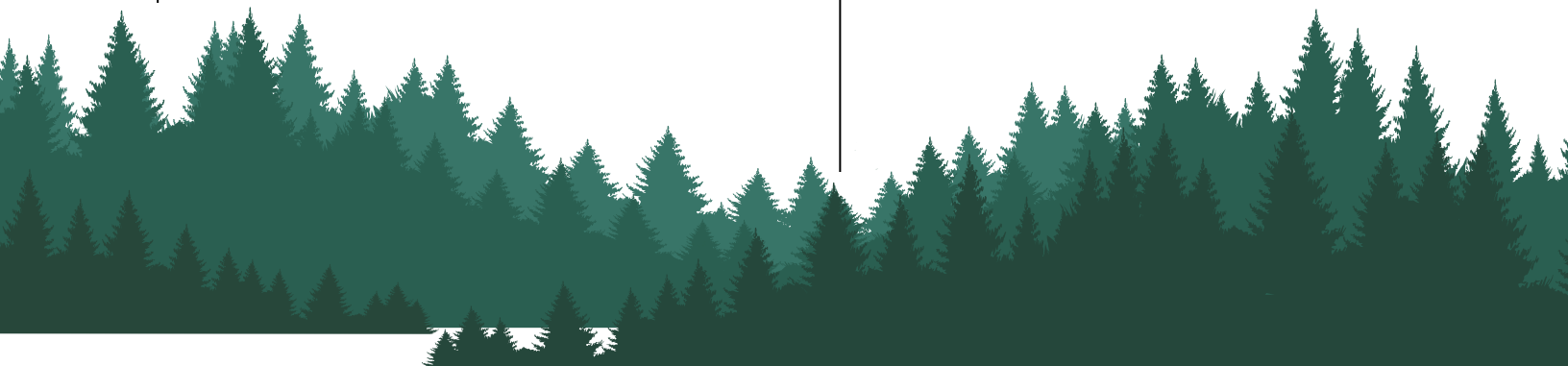


Figure 2: Map of project location relative to modeled wildfire risk to communal water supplies in the Cache la Poudre and Big Thompson Watersheds.





Before



After

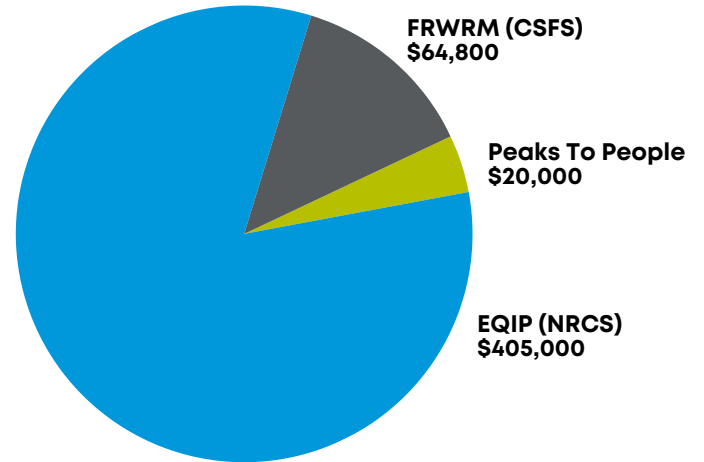


After

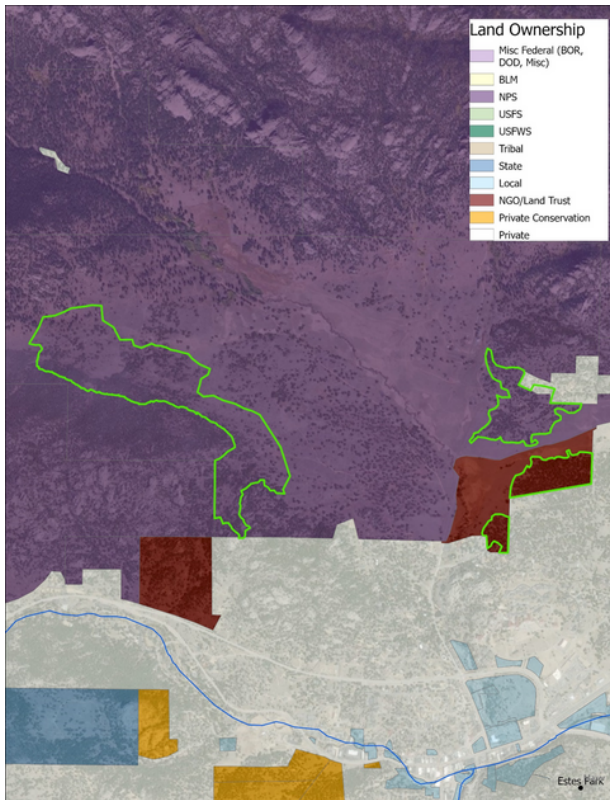
## WATER SUPPLY INFRASTRUCTURE

The treatment units drain into Black Canyon Creek which joins the Big Thompson River ~ 0.7 miles downstream near the town of Estes. Sediment delivered to the mainstem of the Big Thompson River has potential to affect water supply infrastructure associated with the Colorado-Big Thompson Project, the City of Loveland, and the City of Greeley. The closest downstream water infrastructure is Lake Estes < 1 mi downstream of the Black Canyon Creek and Big Thompson confluence. Lake Estes, formed by the Olympus Dam, contributes to the Colorado-Big Thompson Project power system through both the Estes and Pole Hill power plants.

## FUNDING PROFILE

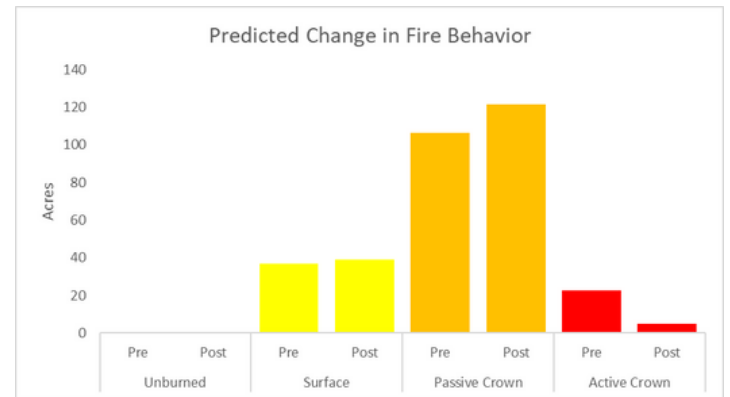


## MAP



Detailed site map showing the proposed project boundary in green, with land ownership depicted with shading

## PREDICTED CHANGE IN FIRE BEHAVIOR



**CONTACT US TO LEARN MORE AND SUPPORT OUR WORK:**



[www.peakstopeople.org](http://www.peakstopeople.org)



[info@peakstopeople.org](mailto:info@peakstopeople.org)



970-829-0020