



CHELEY MAIN CAMP 2023 RESTORATION PROJECT



Implementing Agency:
Larimer Conservation District

Funding Agencies:
**Natural Resource Conservation Service
Peaks to People Water Fund**

Funding Year:
2023

Treatment Type:
Mechanical Thinning

Watershed:
Big Thompson

Location:

Cheley Camps of Colorado is located roughly 4 miles south of Estes Park, Colorado in rural Larimer County (Fish Creek HUC 12 Watershed).

PROJECT DESCRIPTION

LCD has identified 40.6-acres of forest in need of treatment. Historic forest type is Ponderosa Pine. Species composition has drastically shifted, tree densities are much higher, & average tree age class is lower than historic reference conditions for the site. The property has and is currently experiencing pest and disease mortality events, resulting in areas of patchy mortality. This project area requires heavy tree thinning to restore the forests to a healthy composition, structure, and ecologically functioning system. Project deliverables are to treat up to 10 contiguous acres within the greater 40.6-acre project area, where slopes and terrain allow.

EXPECTED OUTCOMES

40 acres
Fuels Reduction and Forest Restoration

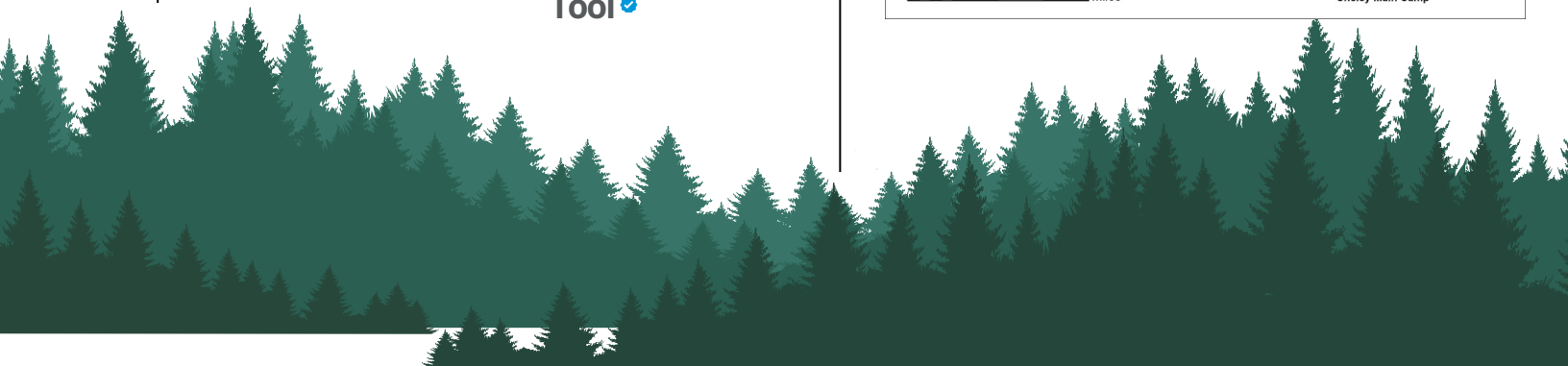
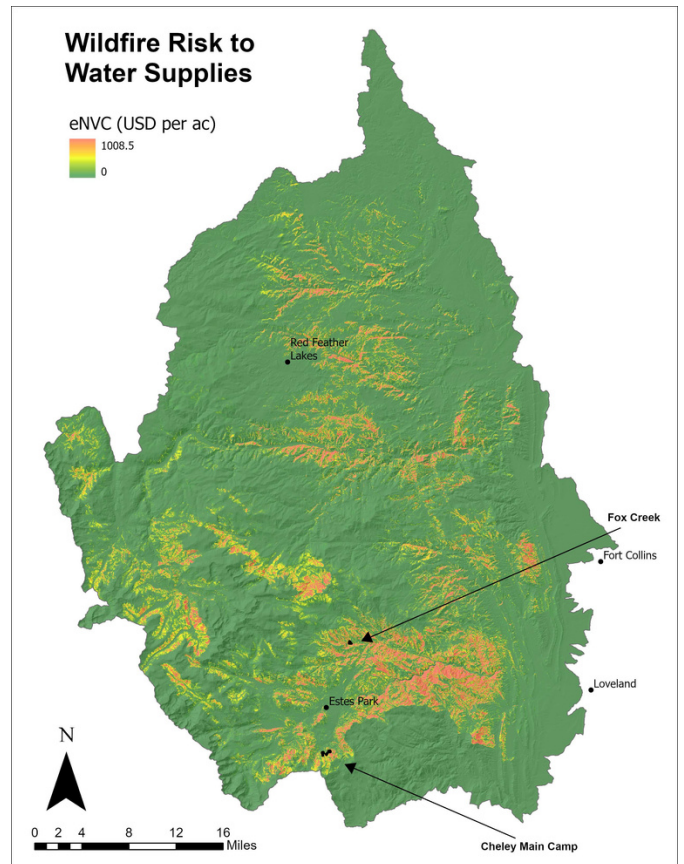
183 homes
Homes Within Influence Zone of Treatments

15 acres
Active Crown Fire Reduced

274 metric tons
Conditional Reduction in Sediment Delivered To Water Supplies

\$8,271
Conditional Reduction in Sediment Costs to Water Supplies

507 metric tons
Conditional Reduction in Erosion

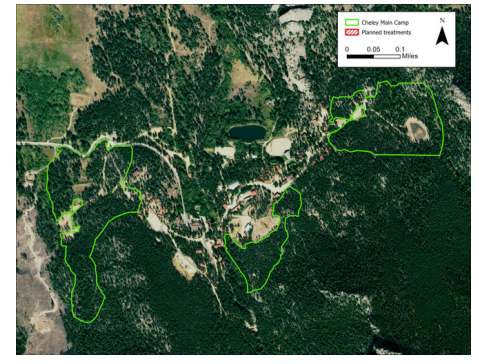




Before



Before

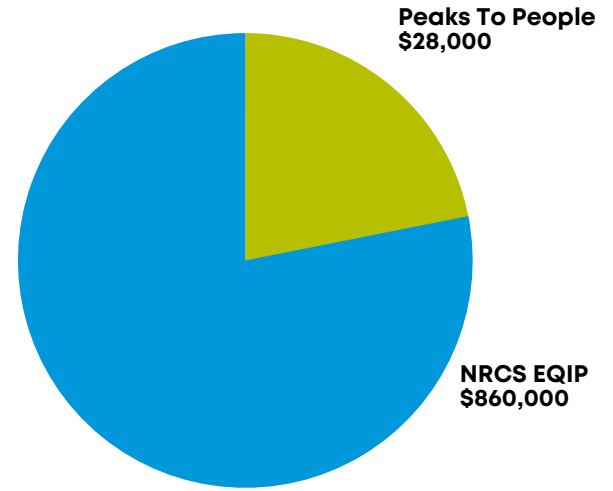


Project Map

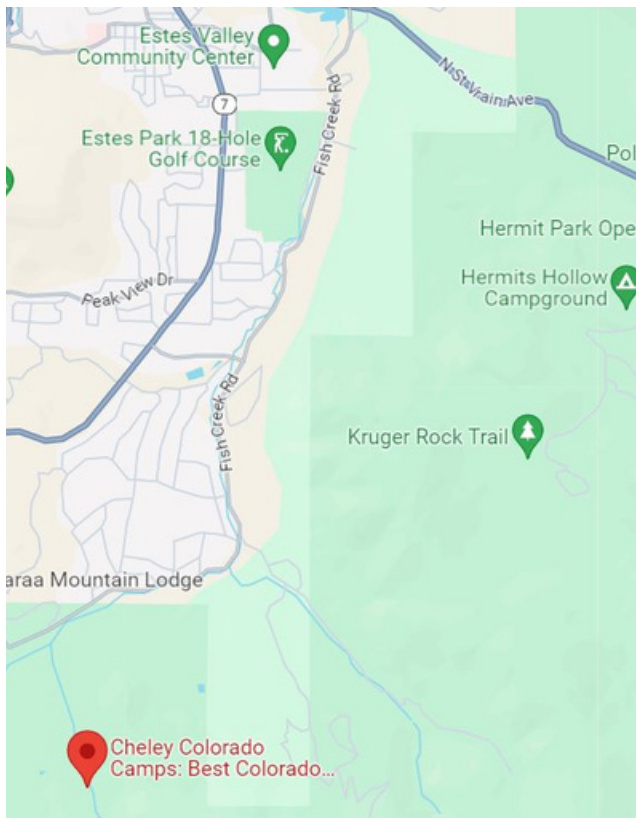
WATER SUPPLY INFRASTRUCTURE

The Cheley property drains into the mainstem of the Big Thompson River. This area is characterized by moderate wildfire risk to water supplies and given the small treatment size, would result in relatively small potential crown fire and sediment yield reductions. The downstream values include Barnes Ditch, the Loveland Greeley Canal, the Loveland pipeline, the Dille tunnel, and George Rist ditch which are valued by the Cities of Greeley and Loveland, and Northern Water.

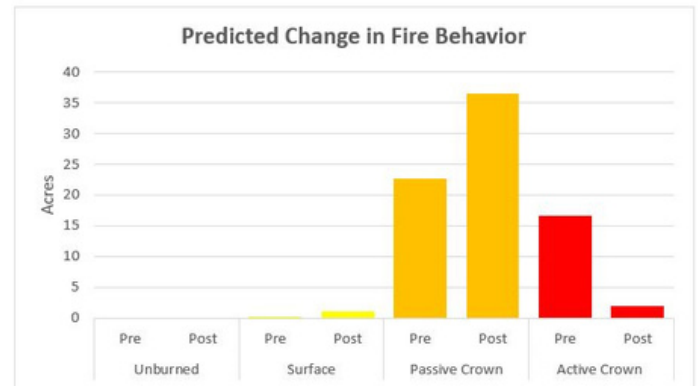
FUNDING PROFILE



MAP



PREDICTED CHANGE IN FIRE BEHAVIOR



CONTACT US TO LEARN MORE AND SUPPORT OUR WORK:



www.peakstopeople.org



info@peakstopeople.org



970-829-0020