



BREAKIRON FOREST RESTORATION PROJECT



Implementing Agency:
Larimer Conservation District

Funding Agencies:
**Natural Resource Conservation Service
Peaks to People Water Fund**

Funding Year:
2021

Treatment Type:
Mechanical Thinning

Watershed:
Big Thompson

Location:

The project area is located approximately two and a half miles northeast of Drake, Colorado along the north rim of the Big Thompson Canyon

PROJECT DESCRIPTION

This project consists of a forest restoration treatment of 32 acres that borders the Arapaho Rosevelt National Forest in the Storm Mountain Area. The treatment is meant to restore forest functionality, species composition, and density as well as reduce the severity of a wildlife passing through. The Forest type is ponderosa pine at approximately 7,000 ft of elevation. Approximately a quarter of the forested portion of the project area has higher than 50% canopy cover according to LANDFIRE. The site area is all less than 40% slope, so there should be limited operability issues. The project is also near treatment planned on National Forest lands and the Cedar Park neighborhood.

EXPECTED OUTCOMES

32 acres

Fuels Reduction and Forest Restoration

142 homes

Homes Within Influence Zone of Treatments

6 acres

Active Crown Fire Reduced

164 metric tons

Conditional Reduction in Sediment Delivered To Water Supplies

\$1,434

Conditional Reduction in Sediment Costs to Water Supplies

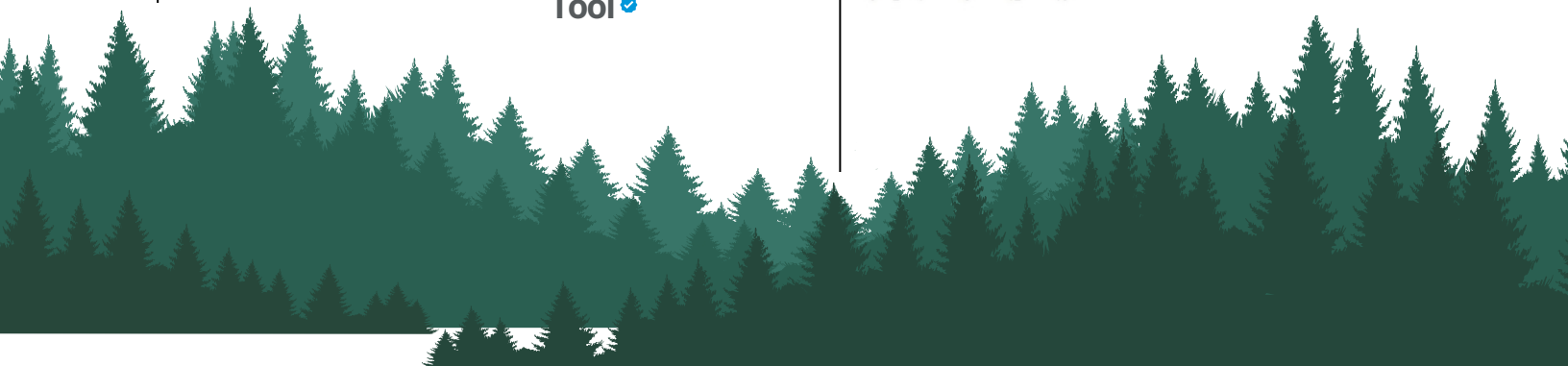
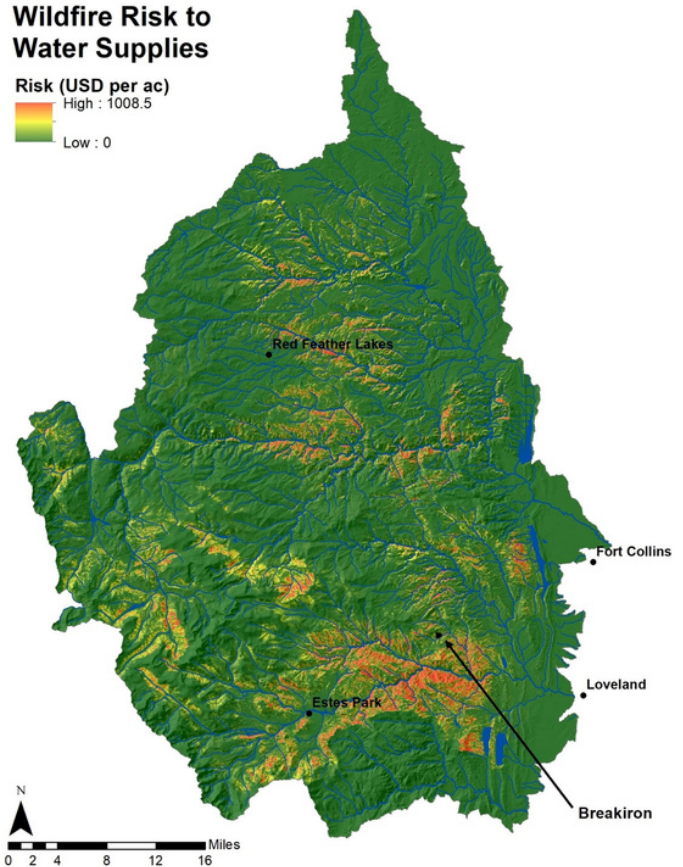
191 metric tons

Conditional Reduction in Erosion



Wildfire Risk to Water Supplies

Risk (USD per ac)
High : 1008.5
Low : 0





PHOTOS - Before



PHOTOS - During

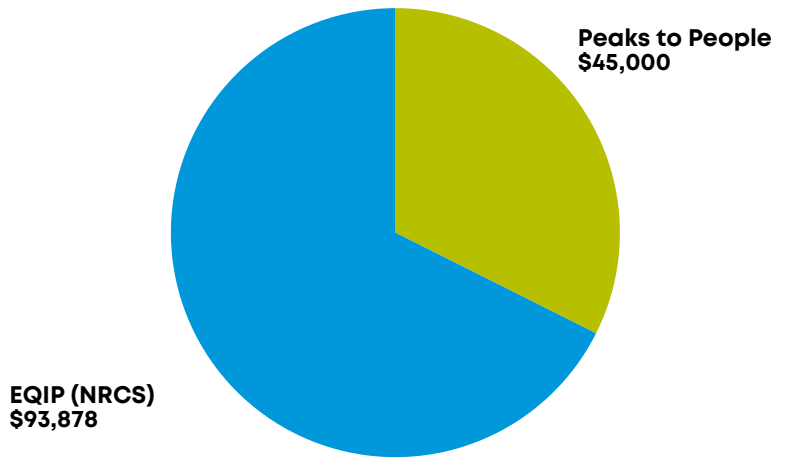


PHOTOS - After

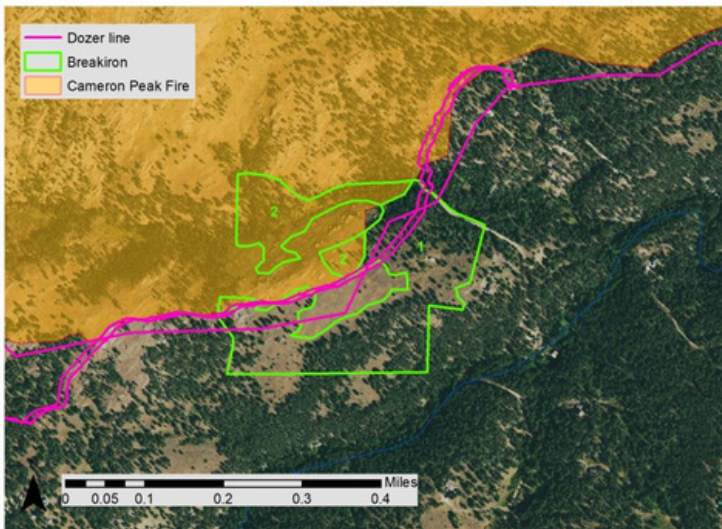
WATER SUPPLY INFRASTRUCTURE

The project area is within a single catchment that drains to the Big Thompson River via Cedar Creek. The Dille Tunnel is located just 1.5 river miles downstream of where Cedar Creek flows in the Big Thompson. The Dille Tunnel is part of the Colorado-Big Thompson (C-BT) system and is important for Northern Water, the Western Area Power Administration, and the City of Loveland. Further downstream are the Loveland-Greeley Canal and Barnes Ditch, which are part of the City of Greeley water system. The project area is mapped as moderate risk to water supplies due to proximity to multiple downstream water supplies, moderate forest density, and low to moderate slope steepness.

FUNDING PROFILE

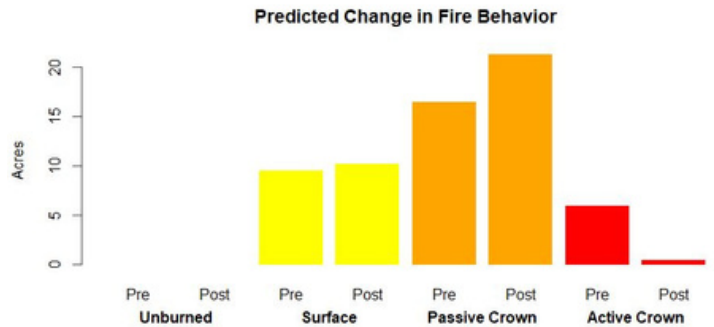


MAP



Map of project area in relation to the Cameron Peak Fire perimeter and incident dozer line features from the National Interagency Fire Center.

PREDICTED CHANGE IN FIRE BEHAVIOR



CONTACT US TO LEARN MORE AND SUPPORT OUR WORK:



www.peakstopeople.org



info@peakstopeople.org



970-829-0020