



WALTONIA FOREST THINNING AND WILDFIRE RISK REDUCTION



Implementing Agency:
Big Thompson Watershed Coalition

Funding Agencies:
**Peaks to People Water Fund
Northern Water, CSFS, CO-DNR,
U.S.Forest Service**

Funding Year:
2023

Treatment Type:
Mechanical Thinning followed by pile burning

Watershed:
Big Thompson

Location:

Waltonia is located halfway between Estes Park and Loveland, Colorado, off of Highway 34.

PROJECT DESCRIPTION

This project includes 50 acres of forest treatment across small- to mid-acreage parcels within the community in addition to 1- mile of roadway defensible space work along Waltonia road from the entrance bridge up to the private gate at the top of the road. Waltonia is located in a narrow draw between heavily forested, steep canyon walls. The proposed treatment units are dominated by ponderosa pine and mixed conifer forests which are particularly dense on the west side of the valley.

EXPECTED OUTCOMES

50 acres
Fuels Reduction and Forest Restoration

84
Homes within 1 km of Treatment Area

28 acres
Active Crown Fire Reduced

770 metric tons
Conditional Reduction in Sediment Delivered To Water Supplies

16 acres
Crucial Wildlife Habitat Protected from wildfire

\$12,834
Conditional Reduction in Sediment Costs to Water Supplies

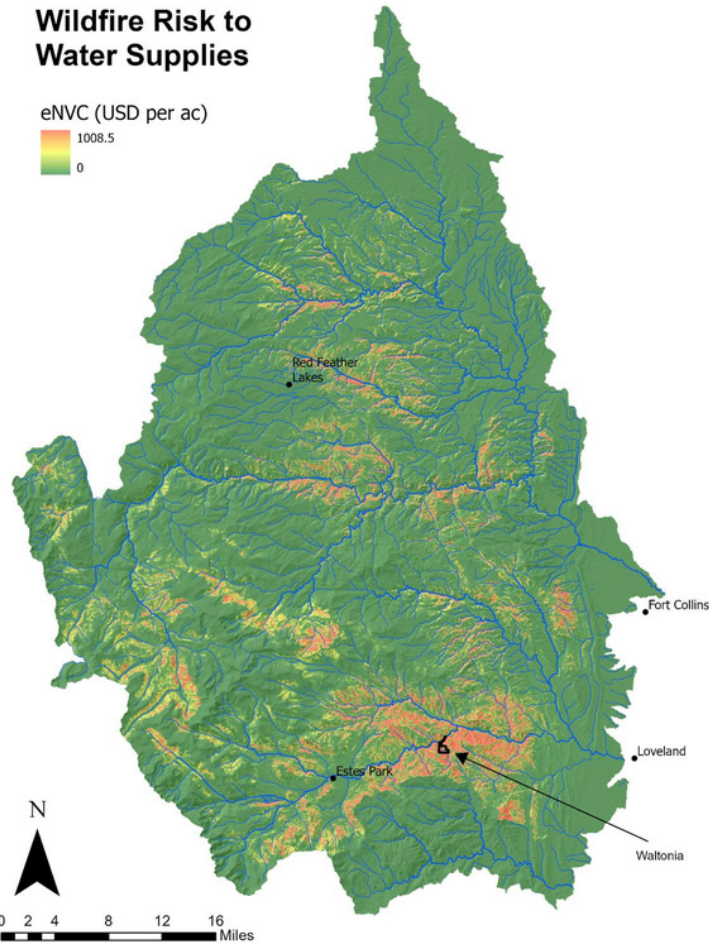
2,663 metric tons
Conditional reduction in sediment delivered to water supplies

1,318 metric tons
Conditional Reduction in Erosion



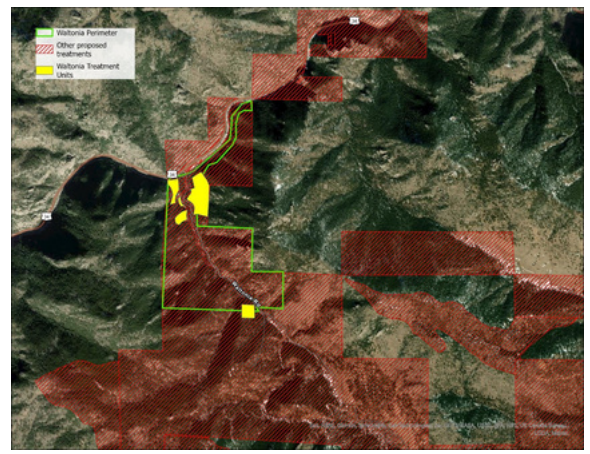
Wildfire Risk to Water Supplies

eNVC (USD per ac)
1008.5
0





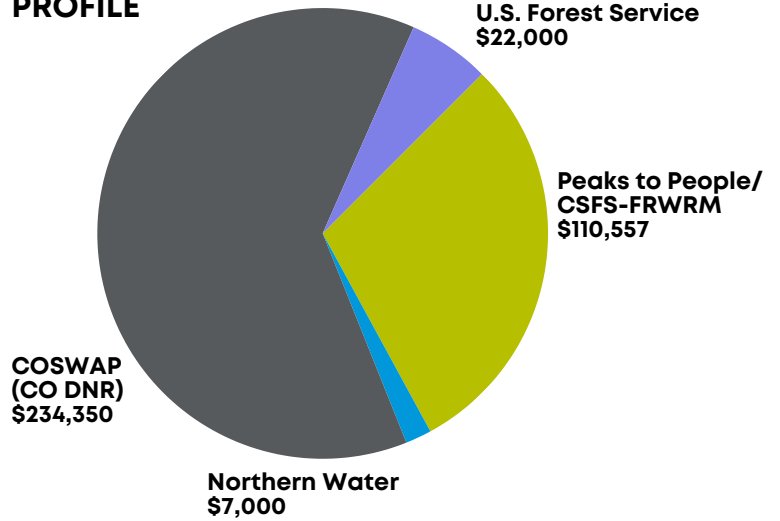
Before



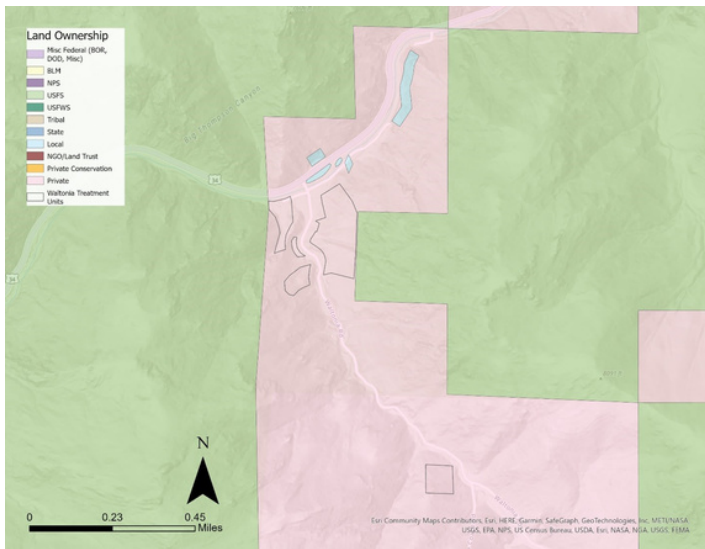
WATER SUPPLY INFRASTRUCTURE

The Waltonia property drains into the Big Thompson River. This area is characterized by high wildfire risk to water supplies (Figure 2) and potential crown fire and sediment yield reductions could be substantial (Table 1). The downstream values include Barnes Ditch, the Loveland Greeley Canal, the Loveland pipeline, the Dille tunnel, and George Rist ditch which are valued by the Cities of Greeley and Loveland, and Northern Water.

FUNDING PROFILE

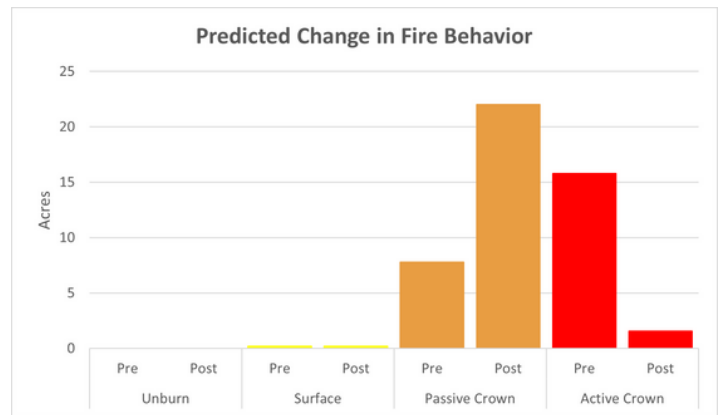


MAP



Location of the Waltonia project relative to land ownership.

PREDICTED CHANGE IN FIRE BEHAVIOR



CONTACT US TO LEARN MORE AND SUPPORT OUR WORK:



www.peakstopeople.org



info@peakstopeople.org



970-829-0020