



Our health, wealth and quality of life all depend on our greatest resource – water. But severe wildfires are threatening the watersheds that supply water to our businesses and communities. Peaks to People exists to change that.

New Name. New Website. Same Mission.

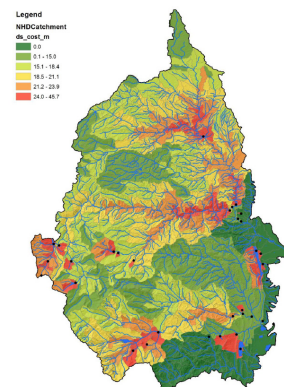
The Colorado Conservation Exchange is now the Peaks to People Water Fund. Peaks to People's goal is to dramatically accelerate forest restoration to reduce the threat of wildfires and protect water sources in the Cache la Poudre and Big Thompson watersheds. We will accomplish this through a watershed investment fund in which downstream water users provide resources to land stewards to implement forest health practices. These fuels reduction treatments reduce the likelihood of severe wildfire and impacts to water. Other benefits of these projects include improved habitat and reduced firefighting costs, structure loss, and recreation impacts.

Visit www.peakstopeople.org to learn more. You can also connect with Peaks to People on Facebook and LinkedIn.



The Watershed Investment Tool

The Watershed Investment Tool allows Peaks to People to prioritize treatment types and locations based on the greatest potential wildfire risk reduction. The tool simulates fire impacts with and without fuel reduction treatments and picks treatments where the largest benefits are achieved. The tool optimizes treatment to influence 31 features of concern identified by local water providers. The user may input different budget levels and the values of each feature are weighted based on a user's priorities. For instance, if a water beneficiary is interested in investing in protecting resources in the Cache la Poudre, the model can apply their budget to pick treatments that produce the largest benefits to water features in the Cache la Poudre. Over the coming months Peaks to People will be sharing the Watershed Investment Tool with partners and seeking feedback. If you are interested in learning more about the tool, please contact the Director at heather@peakstopeople.org.



Results of the Watershed Investment Tool showing the relative value of fuels reduction treatment in the two watersheds.

Our Business Plan

Peaks to People worked with WRA, Inc. to develop a business plan that outlines the added values Peaks to People can bring to the two watersheds. Based on feedback from Working Group members and partners and other analysis, several roles for Peaks to People are envisioned. These include:

1. Connect downstream water users and land stewards.
2. Identify priority places for restoration and the most cost-effective treatments.
3. Create consistency in verification of project outcomes and measures of success.
4. Track and report on the outcomes of forest health treatments in the watersheds.
5. Obtain new and significantly scaled sources of funding for forest health treatments.

In addition to water providers and philanthropy as potential beneficiaries that may invest in Peaks to People, the consultants evaluated businesses that have the highest potential of contributing to Peaks to People. Peaks to People will meet with these businesses over the coming months to learn about their perspectives on wildfire risk reduction and gauge their interest in working with Peaks to People.

Next Steps

As Peaks to People enters its final year of its Proof of Concept Phase, these projects will take top priority:

- Implement the Peaks to People Business Plan to include engaging businesses interested in water.
- Complete refinements to the Watershed Investment Tool.
- Work with water beneficiaries and partners to create a joint vision and long-term goals for fire mitigation in the two watersheds.
- Engage landowners in high priority areas identified in the Watershed Investment Tool.

How You Can Help

Do you know of a business that would be interested in working with Peaks to People? Would your group like to hear a presentation on Peaks to People? Would you like to learn more or get involved yourself? Please contact the Director at heather@peakstopeople.org.

About Peaks to People

Peaks to People is sponsored by the Center for Collaborative Conservation at Colorado State University and The Nature Conservancy. The sixteen member Working Group consists of localities, utilities, businesses, land managers and conservation practitioners.

Snapshots From the Forest



Pile Burning at Peaks to People's Big Thompson Demonstration Site.



Pile Burning results at Peaks to People's Big Thompson Demonstration Site

This project has been funded wholly or in part by the United States Environmental Protection Agency under assistance agreement 83590301 to the U.S. Endowment for Forestry and Communities. The contents of this document do not necessarily reflect the views and policies of the Environmental Protection Agency, nor does the EPA endorse trade names or recommend the use of commercial products mentioned in this document.



Peaks to People
Water Fund

info@peakstopeople.org
970 829.0020
peakstopeople.org